

# Hydraulic Security Bollards

**SKU:OT-BOLASDAC271**



**IP68**



3M Reflective Tape  
LED Warning Lights



**SUS304**

PLC Program  
Control Cabinet



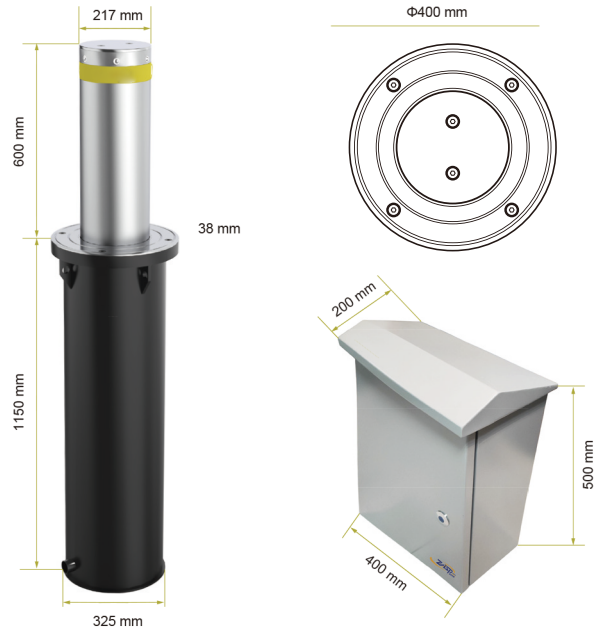
Outdoor  
Control Cabinet

The OT-BOLASD217 bollard is recommended for use in any pedestrian areas, private parkings, business parkings, private driveways, business driveways, commercial driveways.

- Hydraulic bollards with built-in pump
- SGS certified rising and descent speed;
- SGS certified IP68 waterproof and dustproof
- SGS certified durability test of continuous operating with 5000 loops;
- SGS certified nominal operating temperature -40°C ~ +70°C, dry heat test, low temperature resistance test;
- PLC controller linkage work with vehicle identification, inductive loops, CCTV, beam barrier, etc.

## Specifications

Product Dimension	Φ400 x H1150mm
Cylinder Material	304 stainless steel
Cylinder Diameter	217mm
Cylinder Intercept Height	600mm
Rising Cylinder Total Height	760mm
Cylinder Thickness	6mm
Flange Diameter	400mm
Flange Thickness	38mm
Cylinder underground Depth	1150mm
Cylinder underground Diameter	325mm
Movement Principle	Hydraulic driving
Cylinder Stainless Steel Finish	Brushed
Reflecting Adhesive Strip	Yes, 3M brand, Optional colors, Customized LOGO
Emergency Lowering if Power Fails	Yes
Safety Reversal Pressure Switch	Optional
LED light	Yes
Type of Use	Intensive
Life Units	10 years



IP Rating	IP68
Rising Time	3.8s
Lifting Force	200KG
Operating Temperature	-40°C ~ +70°C
Heating Unit	Optional
Overheating Protection	+120°C
Oil Tank Capacity	1L
Power Supply	AC380V / AC220V
Power Consumption	300W

### Hydraulic Actuator

Low temperature sensitivity

No fear of any harsh environment



Control Cabinet Dimension	400mmL x 200mmW x 500mmH
Finish	Outdoor Spray Paint
Self-Testing Program	Yes
Emergency Lowering	Yes
Remote Control Distance	100 meters
Communication Signal	RS-232, RS-485, Ethernet Optional
Air Leakage Switch	Yes, CHNT brand
Power Supply	AC380V / AC220V
Control Voltage	DC12V, Mean Well brand
PLC Controller Linkage Work	Traffic light, Inductive Detector Loop, and other access control equipment

### PLC Control Box

Waterproof design

Widely integration usage

Programmable Logic Controller

