



PRODUCT INFORMATION

The 3-ANNSM Annunciator Support Module provides the electronics required to operate the LED/Switch displays. The support modules are connected to the 3-ANNCPU by ribbon cables. The 3-ANNSM supports the following LED/Switch displays:

2-24R	3-24Y	3-24G
3-12SR	3-12SY	3-12SG
3-12/S1RY	3-12/S1GY	3-12/S2Y
3-6/3S1G2Y	3-6/3S1GYR	



SPECIFICATIONS

Installation	1 space
Current Requirements (does NOT include LED/Switch display)	
Standby	10 mA @ 24 VDC
Alarm	10 mA @ 24 VDC
Operating Environment	
Temperature	32°F (0°C) to 120°F (40°C)
Humidity	93%RH, non-condensing



INSTALLATION

1. Fill out and install a label in each LED/Switch display (step 1.)
2. Mount the display on the 3-ANNSM module (step 2.)
3. Connect the display ribbon cable (P/N 250186) from connector J1 on the display to connector J1 on the module (step 3.)
4. Install the module in the inner door of the enclosure (Figure 2.)

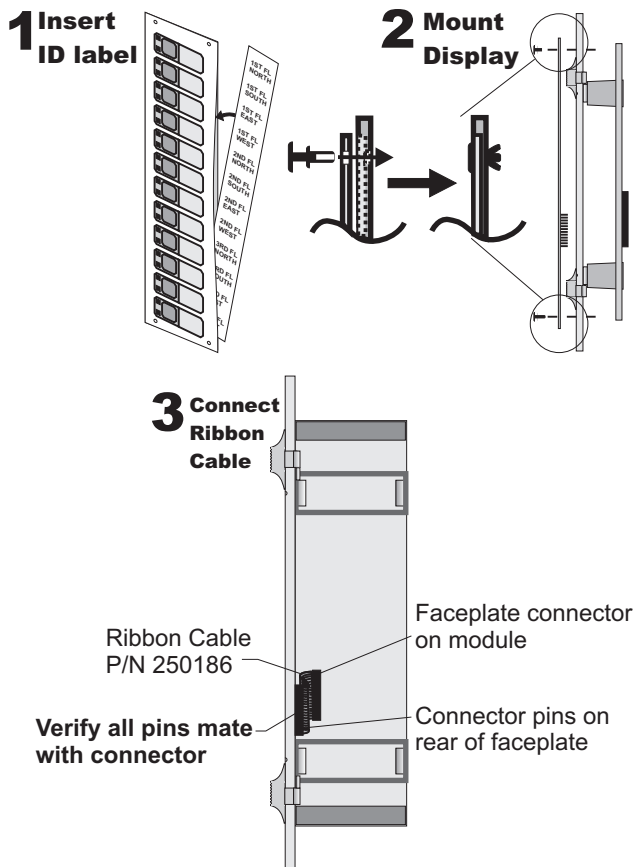


Figure 1
Mounting the LED/Switch Display



Observe static sensitive material handling practices.

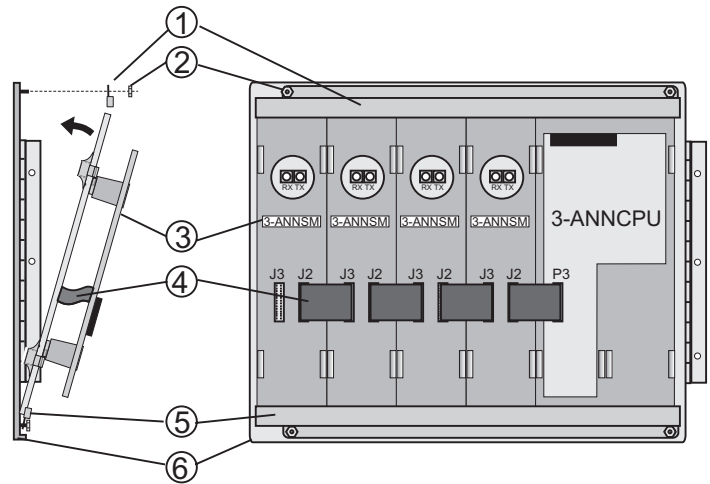


Figure 2
Installing the 3-ANNSM on the Inner Door

1. Install the lower module retainer bracket (5) on the inner door (6) using the nuts (2) provided. Do not tighten the nuts at this time.
2. Place the 3-ANNSM modules in the lower retainer bracket (5) next to the 3-ANNCPU. Install 3-ANNBF blank filler plates in any unused space.
3. Install the top module retainer bracket (1) on the top of the inner door with the nuts (2) provided. Tighten the nuts on both the top and bottom brackets.
4. Install the ribbon cables (4) between modules from P3 on the 3-ANNCPU to J2 on the first 3-ANNSM. Connect the ribbon cables from J3 of the first module to J2 of the next support module until all modules are connected by a ribbon cable.

INSTALLATION SHEET:

3-ANNSM Annunciator Support Module

INSTALLATION SHEET P/N: 387312 FILE NAME: 387312.CDR

REVISION LEVEL: 2.0

APPROVED BY: D. Becker

DATE: 04/06/99

CREATED BY: D. Miner

EDWARDS SYSTEMS TECHNOLOGY, INC.

SARASOTA, FL: 941-739-4300 FAX 941-753-1806

CHESHIRE, CT: 203-699-3000 FAX 203-699-3075

OWEN SOUND, CANADA: 519-376-2430 FAX 519-376-7258

INTERNATIONAL, CANADA: 905-270-1711 FAX 905-270-9553

OFFSET SPEC

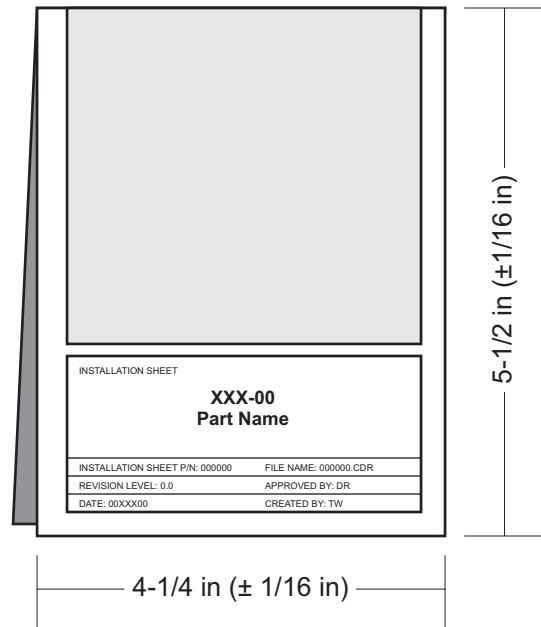
For: letter, portrait

One 8-1/2 in x 11 in sheet printed on one side.

Material is standard white offset stock.

Characters are black on white background.

Fold two times to the dimensions shown, with the part number on the outside.



INSTALLATION SHEET:	
3-ANNSM	
Annunciator Support Module	
INSTALLATION SHEET P/N: 387312	FILE NAME: 387312.CDR
REVISION LEVEL: 2.0	APPROVED BY: D. Becker
DATE: 04/06/99	CREATED BY: D. Miner

ECN: 99-S1844