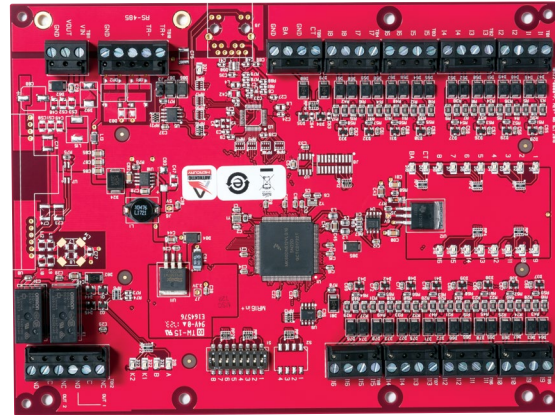


LNL-1100 Series 3

Input Control Module



Overview

Series 3 Lenel® Input Control Module (ICM) provides the access control system with high-speed acknowledgement of critical alarm points in monitored areas. The ICM communicates directly with the Intelligent System Controller (ISC) by either 2-wire or 4-wire RS-485 communication. The ICM has 16 configurable input control points and 2 output control relays. It supports normally open, normally closed, supervised and non-supervised circuits.

The input circuits are scanned using an analog-to-digital converter. The digitized input status signal is software-monitored and controlled, so that each input point can be programmed as a supervised or non-supervised alarm point.

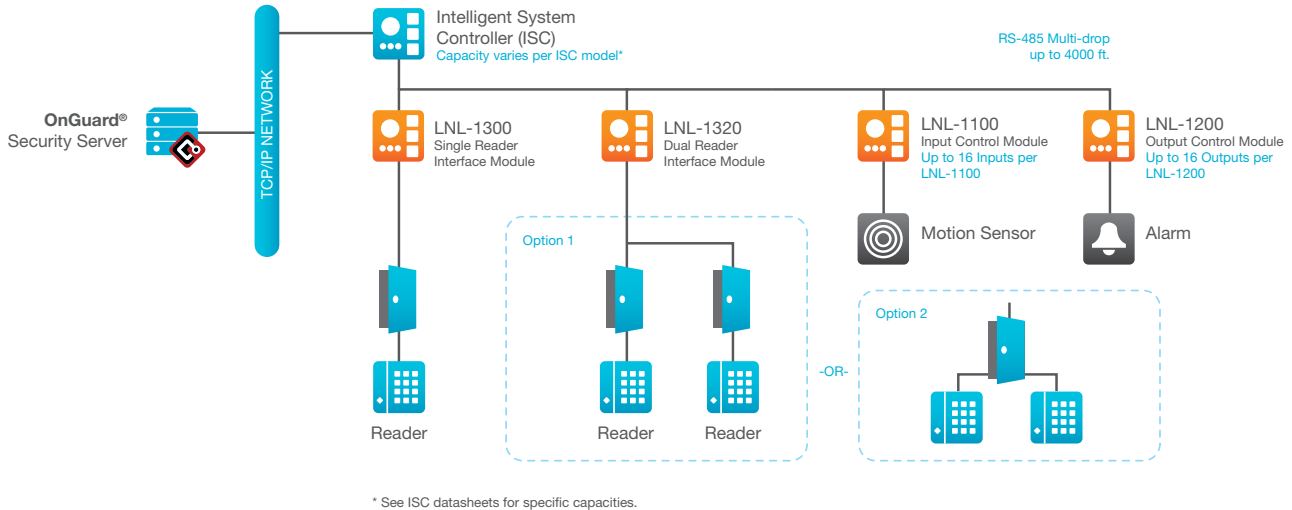
The output relays can also be configured for fail-safe or fail-secure operation. Each relay supports the "On," "Off," and "Pulse" Lenel OnGuard® software commands.

Features & Functionality

- Grade B, A, and AA line supervision
- 12 or 24 VDC input power
- 16 programmable supervised or non-supervised contacts
- 2 Form-C 5 A, 28 VDC contacts for load switching
- 2 dedicated inputs for tamper and power failure status
- On-board termination jumpers
- DIP switch-selectable addressing
- Elevator control, support for 128 floors
- Status LED for host communication and heartbeat
- Variable resistor values for line supervision
- Downloadable firmware
- Advanced Encryption Standard (AES) 128-bit or 256-bit encryption supported, depending on ISC and OnGuard version
- Suitable as replacement for Series 1 and Series 2 boards

LNL-1100 Series 3

System Diagram



* See ISC datasheets for specific capacities.

Power Supplies & Enclosures

LNL-AL400ULX	UL Listed 4A, 110VAC Power Supply – 12VDC 4A output, 115VAC input, continuous supply current with enclosure (15.5" x 12.5" x 4.5"), lock, tamper switch, UPS capable (Battery Optional) UL & CUL Approved
LNL-AL600ULX-4CB6	UL Listed Power Supply – 12VDC 6A output, 115VAC (1.6 amps) input, continuous supply current with enclosure (24" x 18" x 4.5"), lock, tamper switch, power distribution module, UPS capable (Battery Optional) UL & CUL Approved
ABT-12	Battery Kit - 12VDC, 12 AH battery (PS-12120)

Specifications

Primary Power	12 to 24Vdc ±10%, 350mA maximum 12Vdc @ 300mA nominal, 12.27 BTUs 24Vdc @ 220mA nominal, 18.00 BTUs
Outputs	2 outputs, Form-C, 5A @ 28Vdc, resistive
Inputs	16 unsupervised/supervised, standard EOL: 1K/1K ohm, 1%, 1/4 watt 2 unsupervised, dedicated for cabinet tamper and UPS fault monitoring
Mechanical	Dimension: 6" (152mm)W x 8" (203mm)L x 1" (25.4mm)H Weight: 9 oz. (250g) nominal
Environmental Temperature	Operating: 32°F to 158°F (0°C to +70°C) Storage: -67°F to 185°F (-55°C to +85°C)
Humidity	0% to 95% RHNC
Compliance Approvals	FCC Part 15, CE, RoHS, UL 294, UL 1076, ULC CSA-C22.2, CAN/ULC-S319-05, cUL/ORD-C1076



lenel.com

(866) 788-5095

Specifications subject to change without notice.
©2017 United Technologies Corporation. All rights reserved.
All trademarks are the property of their respective owners. Lenel is a part of UTC Climate, Controls & Security, a unit of United Technologies Corporation.

2017/12 (GSP-2463)