

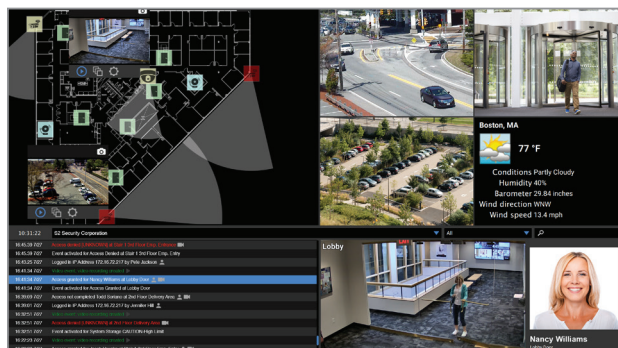
# NetBox Extreme

## Overview

The browser-based NetBox™ Extreme access control and event monitoring system supports up to 128 portals. Optional system partitioning allows the entire database to be separated into multiple smaller systems for entities such as field offices or tenants. Features such as person record and cardholder management, event and alarm monitoring, threat level escalation and reporting are accessible from any web browser. There is no software to install.

The solid-state NetBox Extreme appliance is fast and reliable. The system works with existing infrastructure and peripheral devices, making it easy to deploy. Flexible and scalable, the NetBox Extreme system supports up to 64 LenelS2 Nodes. In addition, it tightly integrates with LenelS2 VRx™ and NetVR™ video management systems, providing unified system management and administration. Integration with third-party video management systems is also supported.

The NetBox Extreme system is well suited for mid-scale deployments. As organizations grow, migration to a NetBox Enterprise system is seamless. Large, distributed organizations can centrally manage multiple NetBox controllers with a NetBox Global server, allowing for virtually unlimited scalability.



The LenelS2 Magic Monitor® client provides a unified access control and video surveillance experience.

## Key Features

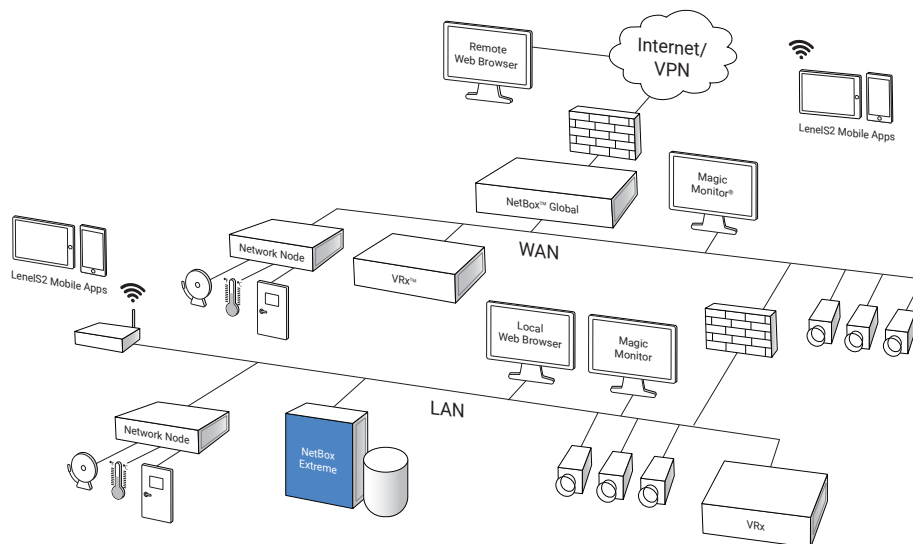
### Access Control

- **Portals:** Supports up to 128 doors or other access points
- **Event and Alarm Monitoring:** Includes comprehensive event logging, notification and escalation
- **Threat Level Management:** Provides configurable system status and response actions such as system lock downs
- **Person Record Management:** Maintains detailed, credential-driven user records and access history
- **Reporting:** Offers pre-defined and custom reports

### System

- **Web Interface:** Delivers browser-based, unified system management and administration
- **Solid-State Design:** Extends product lifecycle, lowering total cost of ownership
- **Video Integration:** Works with LenelS2 VRx and NetVR video management systems and third-party video systems
- **API Support:** Integrates with third-party products such as human resource databases via an open source API
- **Automated System Management:** Automatically discovers LenelS2 Nodes and handles system backups
- **Mobile Apps:** Enables mobile security management, mobile credentials and more
- **System Partitioning Option:** Allows the entire database to be separated into multiple smaller systems





Schematic only. Not a network diagram.

## Specifications – NetBox Extreme

### Access Control

Cardholders	40,000
Access Levels	Unlimited
Unique User Roles	16
Simultaneous Users	10
Time Specifications	512
Portal Capacity	128
LenelS2 Node Capacity <sup>1</sup>	64
Maximum Inputs / Outputs	2,000 / 2,000
Online Transactions	Up to 40 million records

### Appliance

Storage Capacity	20GB
Processor	Intel Atom® N2800
Memory (RAM)	8GB total
Operating System	Ubuntu Linux
Ethernet Ports	1
MTBF	213,447
Chassis	Wall mount or standard 2U rack mount
Dimensions (H, W, D)	Wall Mount: 13in x 10.5in x 3.57in 330mm x 267mm x 907mm Rack Mount: 3.5in x 17.2in x 11in 330mm x 267mm x 907mm
Weight	9.7 lbs (4.4 kg) maximum
Operating Temperature	32° – 95°F (0° – 35°C)
Storage Temperature	-4° – 158°F (-20° – 70°C)
Operating Environment	Humidity 85%, non-condensing 35°C
AC Input	86 – 264 VAC, 47/440 Hz, 1.5A

### Appliance (continued)

BTU Maximum	256 per hour
Regulatory Approvals	UL, CE, FCC, RoHS
Warranty	2 years, hardware; 1 year, software

### Client Requirements

Operating System	Any; for badging use Windows® 10
Browser <sup>2</sup>	Chrome™, Internet Explorer®, Firefox® and Safari®
Processor	Intel® Core™ i3 or higher
Memory (RAM)	8GB minimum
Hard Drive	100GB minimum

### Integrations<sup>3</sup>

Video Management	VRx, NetVR and other major VMS manufacturers
VRx/NetVR Capacity	16
VRx/NetVR Camera Capacity	1,024
Concurrent LenelS2 Client Connections (NetBox, Magic Monitor, Mobile Security Professional®)	10
Third Party VMS Camera Capacity	256
Access Control	Allegion, ASSA ABLOY and Mercury
Intrusion	Bosch and DMP

### Part Numbers

S2-EX50-128-G2	Includes 128 Portal License In 1U Rack Mount Server
S2-EX100-128-G2	Includes 128 Portal License In 1U Rack Mount Server

Portal licenses expandable to 128 portals.

<sup>1</sup> Network Node capacity may vary depending on system design.

<sup>2</sup> Refer to the latest Release Notes for browser version compatibility.

<sup>3</sup> For additional integration information, please contact us.



For more information, please visit [lenels2.com](http://lenels2.com).

Specifications subject to change without notice.

©2016, 2021 Carrier. All Rights Reserved. All trademarks are the property of their respective owners. LenelS2 is a part of Carrier.

S2081721

