



# NetBox VRx

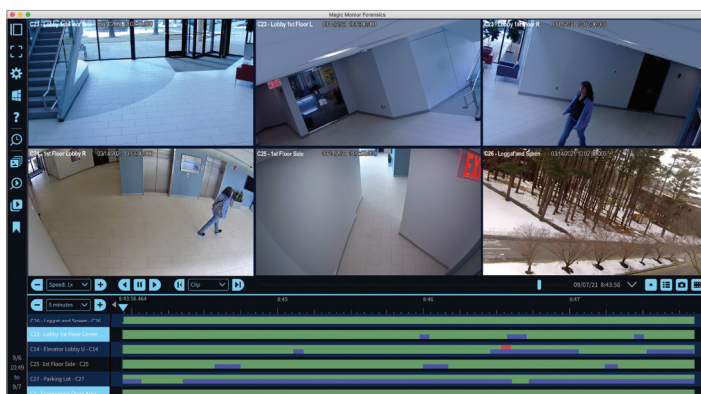
## Overview

The browser-based NetBox™ VRx™ access control and video management solution tightly integrates NetBox access control with VRx next-generation video management and supports up to 32 portals and 16 IP cameras. The system works with existing infrastructure and peripheral devices, making it easy to deploy. There is no software to install. Access control, event monitoring, video surveillance and video forensics are available through the NetBox and VRx web browser interfaces, Magic Monitor® client or Mobile Security Professional® app.

The NetBox VRx system delivers unified system management and administration. Access control logs, event monitoring and video surveillance are seamlessly integrated and optimized for ease of use. For example, by clicking on an icon in the real-time activity log, users can instantly play back recorded video associated with an event.

The NetBox VRx system can also manage and display crowdsourced video. Video footage submitted to the security team can be stored on the appliance and made available for forensic investigation.

Large, distributed organizations can centrally manage multiple NetBox VRx systems with a NetBox Global server, allowing for virtually unlimited scalability.



Easily search, review and catalog video with Magic Monitor Forensics.

## Key Features

### Access Control

- **Portals:** Supports up to 32 doors or other access points
- **Event and Alarm Monitoring:** Includes comprehensive event logging, notification and escalation
- **Threat Level Management:** Provides configurable system status and response actions such as system lock downs
- **Person Record Management:** Maintains detailed, credential-driven user records and access history
- **Reporting:** Offers pre-defined and custom reports

### Video Management

- **Cameras:** Supports up to 16 IP cameras
- **ONVIF®:** Conforms to Profile T as an ONVIF registered product
- **High-Quality Video:** Supports 4K cameras and H.265 codec
- **Real-Time Surveillance:** Allows for live video tours and on-screen PTZ controls
- **Forensic Search:** Locates recorded video of interest with a single click and saves it to the case library
- **Storage:** Includes options for video storage in 2TB and 4TB configurations

### System

- **Seamless Integration:** Tightly integrates credential-based access control and video management
- **Web Interface:** Delivers browser-based, unified system management and administration
- **Customizable Monitoring Displays:** Provides customization of real-time monitoring displays, with single or multi-camera views
- **API Support:** Integrates with third-party products such as human resources databases via an open API
- **Mobile Apps:** Enables mobile security management, mobile credentials and more



# Specifications – NetBox VRx

## Access Control

Cardholders	60,000
Access Levels	512
Unique User Roles	Unlimited
Simultaneous Users	5
Time Specifications	512
Portal Capacity	32
LenelS2 Node Capacity <sup>1</sup>	32
Maximum Inputs/Outputs	512

## Video Management

IP Camera Streams	Up to 16
IP Camera Resolution	Camera dependent, up to 4K
IP Camera Frame Rate	Camera dependent
Compression Type	H.264 or H.265 (camera dependent)

## Appliance

Video Storage	2TB or 4TB
Processor	Intel® Dual Core™ i3
Memory (RAM)	8GB
Operating System	Ubuntu Linux
Ethernet Ports	1
MTBF	107,071
Serial Ports	2
Max Video Throughput (Aggregate Inbound + Outbound)	100 Mbps
OS/Application Storage	240GB SSD
Chassis	Standard 2U rack mount
Dimensions (H, W, D)	3.5in x 19.0in x 14.58in (89mm x 483mm x 370mm)
Weight	11 lbs (5 kg) maximum

## Appliance (continued)

Operating Temperature	32° – 120.2° F (0° – 49° C)
Storage Temperature	-4° – 158° F (-20° – 70° C)
Operating Environment	Humidity 85%, non-condensing 35°C
AC Input	85 – 260 VAC (Max 49 W)
BTU Maximum	950 per hour
Regulatory Approvals	UL, CE, FCC, RoHS
Warranty <sup>2</sup>	2 years, hardware; 1 year, software

## Client Requirements

Operating System	Any; for badging use Windows® 10
Browser <sup>3</sup>	Chrome™, Internet Explorer®, Firefox® and Safari®
Processor	Intel Core i3 or higher
Memory (RAM)	4GB
Hard Drive	100GB minimum

## Integrations<sup>4</sup>

Concurrent LenelS2 Client Connections (NetBox, Magic Monitor, Mobile Security Professional)	10
Access Control	Allegion, ASSA ABLOY and Mercury
Intrusion	Bosch and DMP

## Part Numbers

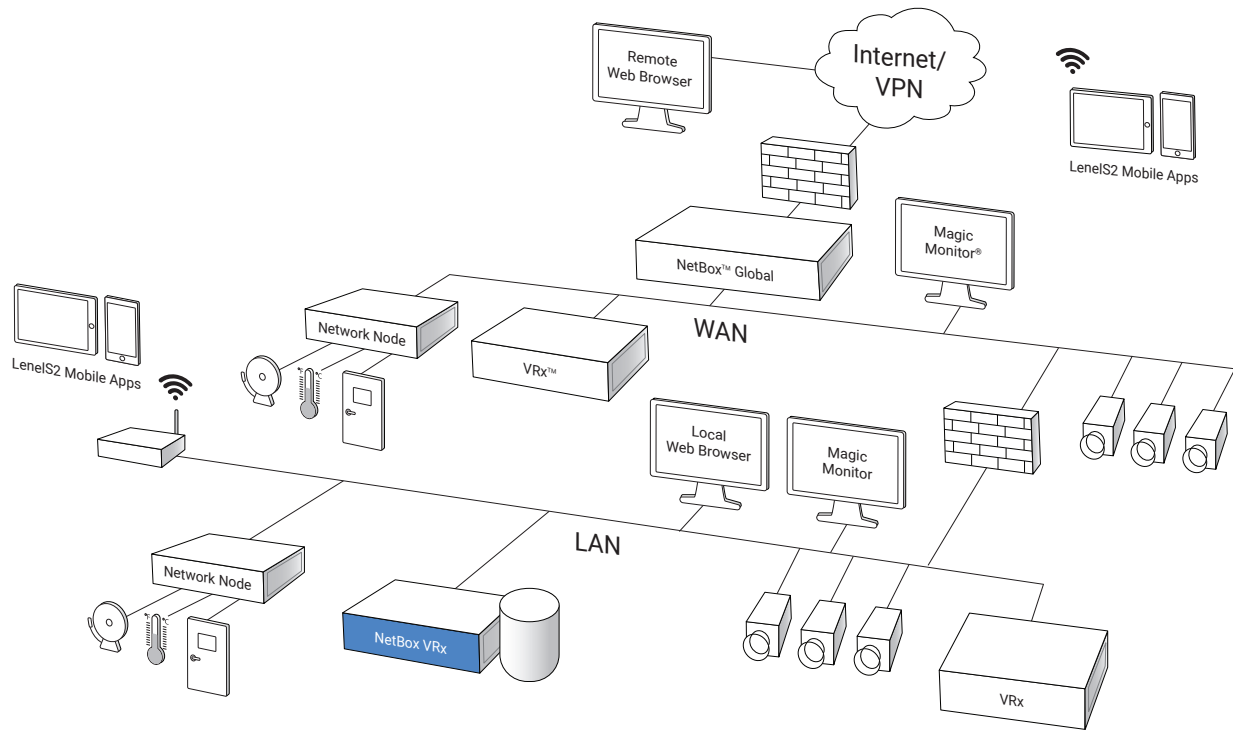
S2-NETBOXVRX-2TB	IP camera licenses expandable up to 8 IP cameras; 2TB HDD
S2-NETBOXVRX-4TB	IP camera licenses expandable up to 16 IP cameras; 4TB HDD
S2-VRX-1C	Single camera license

<sup>1</sup> Network Node capacity may vary depending on system design.

<sup>2</sup> Please contact your LenelS2 authorized Value-Added Reseller for complete warranty details.

<sup>3</sup> Refer to the latest Release Notes for browser version compatibility.

<sup>4</sup> For additional information, please contact us.



*Schematic only. Not a network diagram.*



For more information, please visit [lenels2.com](http://lenels2.com).

Specifications subject to change without notice.

©2019, 2021 All Rights Reserved. All trademarks and service marks referred herein are property of their respective owners. LenelS2 is a part of Carrier.

S2102621

