

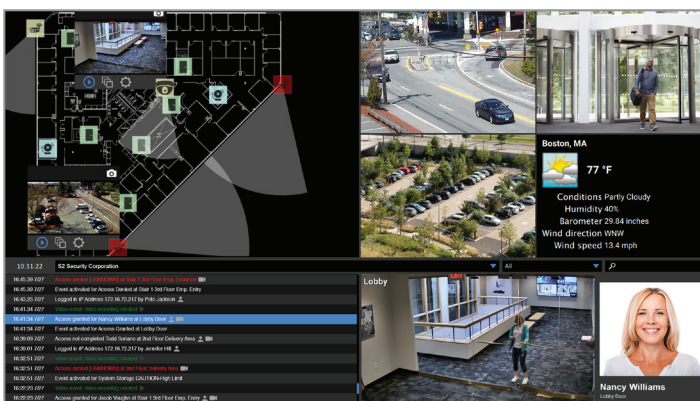
# NetBox

## Overview

The browser-based NetBox™ access control and event monitoring system supports up to 32 portals. Features such as person record and cardholder management, event and alarm monitoring, threat level escalation and reporting are accessible from any web browser. There is no software to install.

The solid-state NetBox appliance is fast and reliable. The system works with existing infrastructure and peripheral devices, making it easy to deploy. Flexible and scalable, the NetBox system supports up to seven LenelS2 application blades and up to 32 portals. In addition, it tightly integrates with LenelS2 VRx™ and NetVR™ video management systems, providing unified system management and administration. Integration with third-party video management systems is also supported.

The NetBox system serves a range of applications from small businesses to field offices of large enterprises. As organizations grow, migration to a NetBox Extreme system is seamless. Large, distributed organizations can manage multiple NetBox controllers with a NetBox Global server, allowing for virtually unlimited scalability.



The LenelS2 Magic Monitor® client provides a unified access control and video surveillance experience.

## Key Features

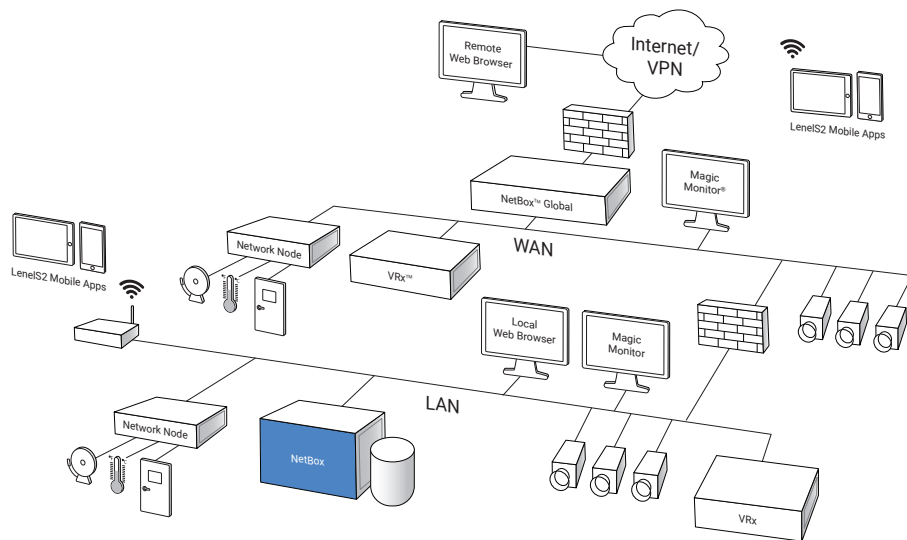
### Access Control

- **Portals:** Supports up to 32 doors or other access points
- **Event and Alarm Monitoring:** Includes comprehensive event logging, notification and escalation
- **Threat Level Management:** Provides configurable system status and response actions such as system lock downs
- **Person Record Management:** Maintains detailed, credential-driven user records and access history
- **Reporting:** Offers pre-defined and custom reports

### System

- **Web Interface:** Delivers browser-based, unified system management and administration
- **Solid-State Design:** Extends product lifecycle, lowering total cost of ownership
- **Blade Support:** Houses up to seven LenelS2 application blades for access control, inputs, outputs and temperature probes
- **Video Integration:** Works with LenelS2 VRx and NetVR video management systems and third-party video systems
- **API Support:** Integrates with third-party products such as human resource databases via an open source API
- **Automated System Management:** Automatically discovers LenelS2 Nodes and handles system backups
- **Mobile Apps:** Enables mobile security management, mobile credentials and more





Schematic only. Not a network diagram.

## Specifications – NetBox

Access Control	
Cardholders	20,000
Access Levels	Unlimited
Unique User Roles	16
Simultaneous Users	5
Time Specifications	512
Portal Capacity	32
LenelS2 Node Capacity <sup>1</sup>	32
LenelS2 Application Blade Support	7 application blades for access control, inputs, outputs and temperature probes
Maximum Inputs / Outputs	500 / 500
Online Transactions	Up to 10 million records
Appliance	
Storage Capacity	20GB
Processor	Intel Atom® N2800
Memory (RAM)	8GB total
Operating System	Ubuntu Linux
Ethernet Ports	1
MTBF	213,447
Chassis	Wall mount
Dimensions (H, W, D)	17in x 17.5in x 8.25in (432mm x 445mm x 210mm)
Weight	10 lbs (4.54 kg)
Operating Temperature	32° – 95°F (0° – 35°C)
Storage Temperature	-4° – 158°F (-20° – 70°C)
Operating Environment	Humidity 85%, non-condensing 35°C
AC Input	86 – 264 VAC, 47/440 Hz, 1.5A

Appliance (continued)	
BTU Maximum	256 per hour
Regulatory Approvals	UL, CE, FCC, RoHS
Warranty	2 years, hardware; 1 year, software

Client Requirements	
Operating System	Any; for badging use Windows® 10
Browser <sup>2</sup>	Chrome™, Internet Explorer®, Firefox® and Safari®
Processor	Intel Core i3 or higher
Memory (RAM)	4GB
Hard Drive	100GB minimum

Integrations <sup>3</sup>	
Video Management	VRx, NetVR and other major VMS manufacturers
VRx/NetVR Capacity	4
VRx/NetVR Camera Capacity	256
Concurrent LenelS2 Client Connections (NetBox, Magic Monitor, Mobile Security Professional®)	5
Third Party VMS Camera Capacity	32
Access Control	Allegion, ASSA ABLOY and Mercury
Intrusion	Bosch and DMP

Part Numbers	
S2-NB4-E2R-WM	Includes 4 portal license and 1 access control application blade supporting 2 readers

Supports up to 7 application blades. Portal licenses expandable to 32 portals.

<sup>1</sup> Network Node capacity may vary depending on system design.

<sup>2</sup> Refer to the latest Release Notes for browser version compatibility.

<sup>3</sup> For additional integration information, please contact us.



For more information, please visit [lenel2.com](http://lenel2.com).

Specifications subject to change without notice.

©2016, 2021 Carrier. All Rights Reserved. All trademarks are the property of their respective owners. LenelS2 is a part of Carrier.

S2081721

